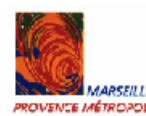
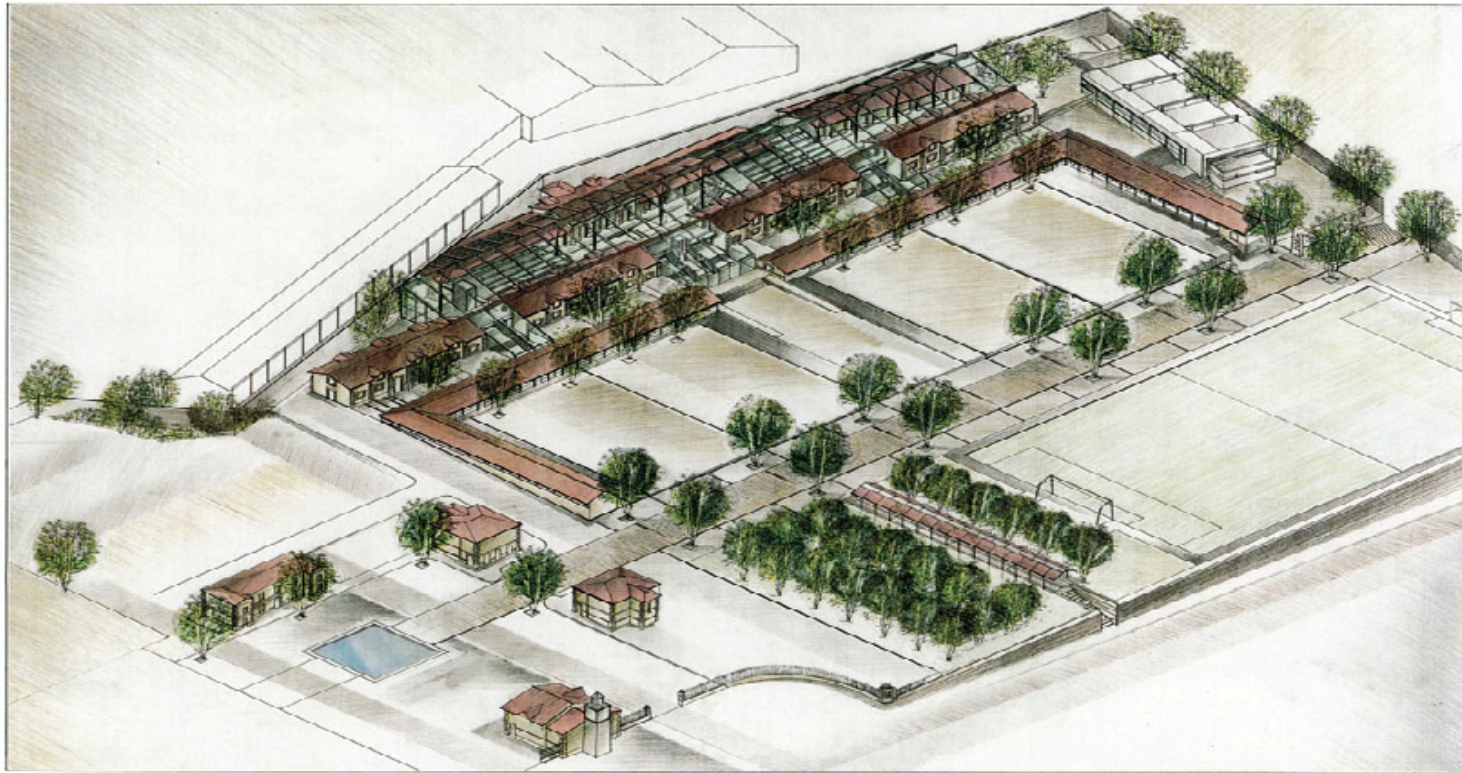




# Marseilles' Second Chance School

[www.e2c-marseille.net](http://www.e2c-marseille.net)





## Introducing Marseilles' Second Chance School and its educational system

- A European Initiative
- The training program we implemented
- Our partnership with enterprises
- September 2004 : let the figures speak
- EDA-E2C: what is at stake
- EDA-E2C Project: the organisation
- The implemented pedagogical approach
- EDA-E2C : An individualized platform
- EDA-E2C : The basic skills core contents in French, mathematics, I.T. and job search
- E2C-ENF Project: A joint action
- E2C-ENF Project: Overall objectives
- E2C-ENF Project: Secondary objectives
- E2C-ENF Project: An example



## Marseille's Second Chance School: A European initiative

### ■ 1995 a European proposal

- initiative of Mrs. Edith Cresson, former EU Commissioner,
- Mrs Cresson presented a White Paper on education and training entitled "*Teaching and Learning: Towards the Learning Society*"
- white paper adopted by the European Commission and by all Education Ministries of the 15 member states of the European Union in November 1995 .

### ■ 1997 the first European school is set up in Marseilles

- in the city of Marseilles and its surroundings, more than 4 000 young people leave the "regular" educational system without any diploma nor qualification
- since July 1995, the City of Marseilles showed its enthusiasm in housing the project
- active support from all local authorities and organisations: Conseil Régional PACA, Conseil Général 13, Communauté de Communes Marseille Provence Métropole, Ville de Marseille et Chambre de Commerce et d'Industrie Marseille Provence.

### ■ Target group

- young adults aged 18 to 25
- having left the "regular" educational system without any diploma nor qualification for at least one year

### ■ Missions

- insertion through training and employment
- skills recognition and validation

# Marseille's Second Chance School: Organization



## Social skills Department

- Recruits trainees
- Deals with any problem trainees may have (social, health related, linked to justice...)
- Stresses social skills (responsibility, time management, respect due to others...)

## Marketing Department

- Develops partnerships with enterprises
  - prospecting
  - career opening
- Organizes the vocational training time table
- Deals with work placements
  - finds work placements
  - develops vocational guidance
  - takes part in the training

**Trainees**

**Partnership  
Associations  
Institutions**

## Teaching Department

- Teaching basic skills
  - French & Mathematics
  - English & Computing and information technology
- Promoting cultural development
  - Sports
  - Sciences & techniques
  - Art & literature
- Helping each trainee define his/her work and above all life project, with the help of collective projects

**Partnership  
Entreprises**

## Marseille's Second Chance School: Typical Training Course

- *An individualized training course in order for a work project to emerge and be validated*

*A training enabling each trainee to*

*learn and grow at  
his/her own pace*

*acquire*

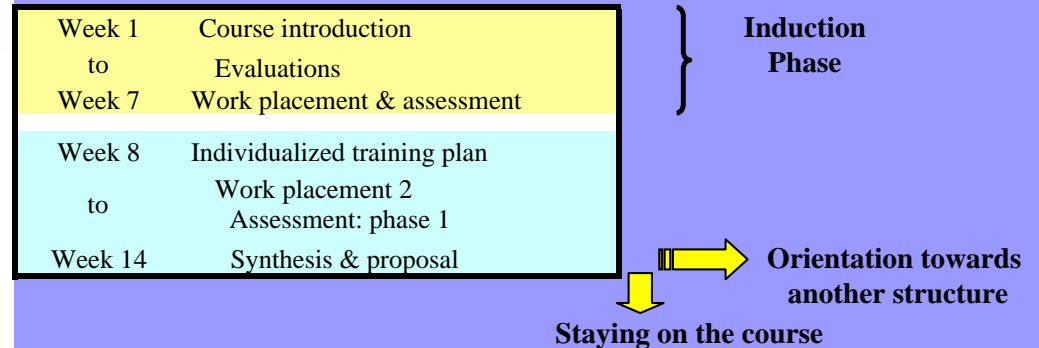
*professional skills*

*pedagogical knowledge*

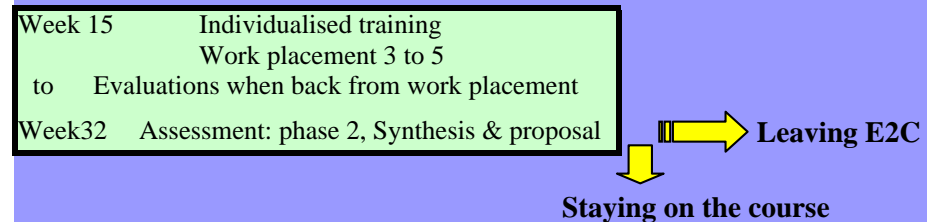
*Pedagogical objective:*

*Enabling each trainee to leave our school having reached at least Level 1 of the E2C's certification*

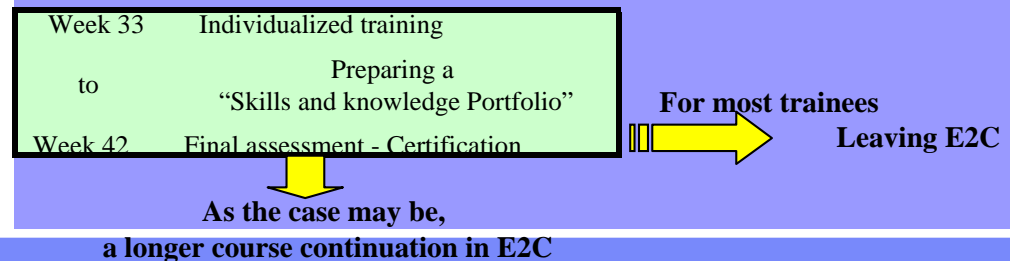
### Phase 1: Evaluating and making emerge the work project



### Phase 2: Implementing the work project and the training plan



### Phase 3: Validating the acquired skills, certification





## Marseille's Second Chance School: Partnerships with enterprises

At the beginning of 2005, the E2C counts as partners more than 1 000 enterprises, enterprises gatherings and entrepreneurs

- They welcome and recruit trainees in more than 60 different areas of work
- They are mostly situated in Marseilles and its metropolitan area

*All sizes and sectors are represented.*

*However because of the reality of the economic context, services (to individuals and to enterprises) are in the majority*

### Comparing the sectorial structure of the E2C's contacts with enterprises, to the Bouches du Rhône production structure

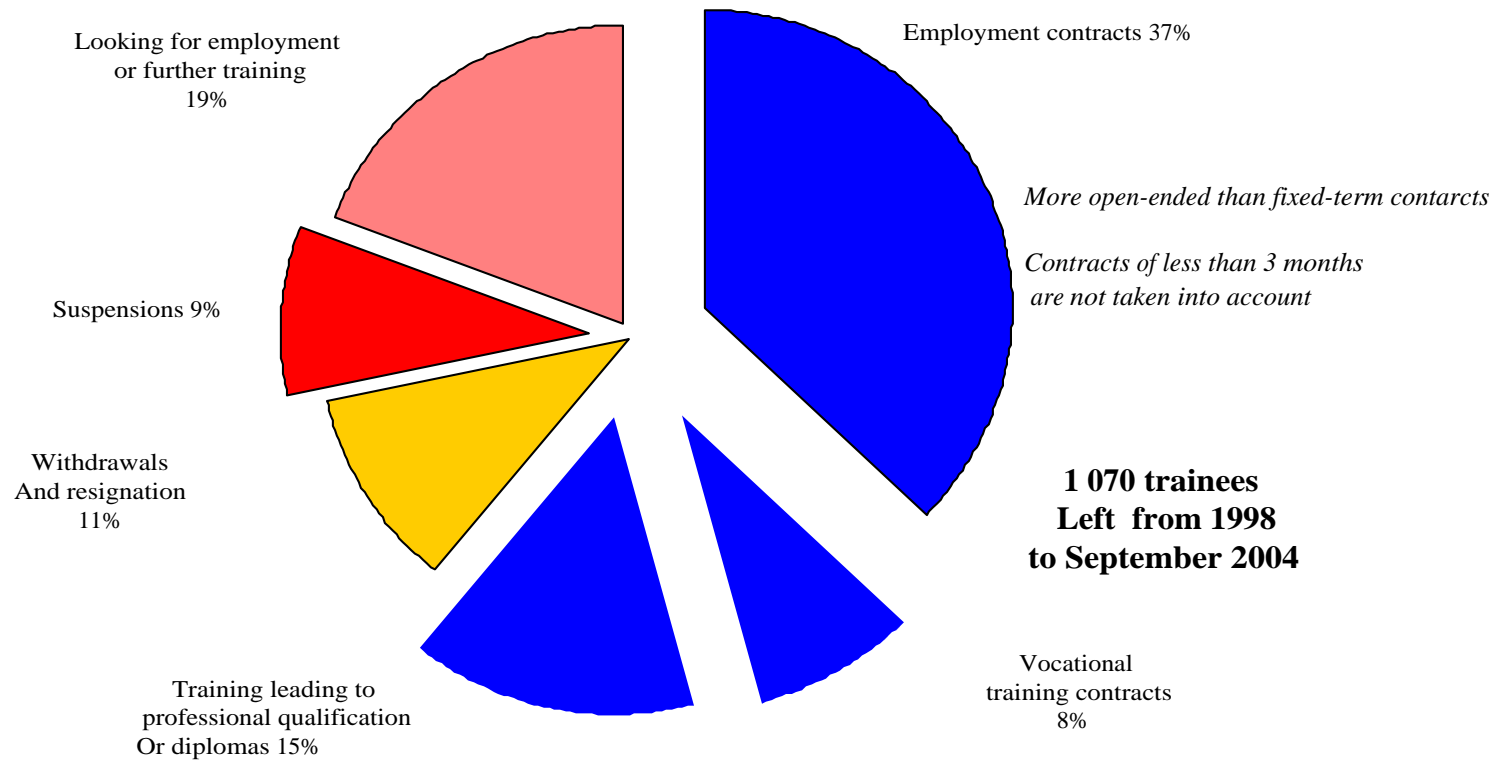
	E2C Contacts	Bouches-du-Rhône
Industry	6,3%	17,0%
Building	8,0%	7,5%
Trade	27,6%	20,4%
Other services	58,1%	55,1%

# Marseille's Second Chance School: Results



**Successful "output" : 60%**

*Negative "output"  
Including the "no- answers"*



*More open-ended than fixed-term contracts  
Contracts of less than 3 months  
are not taken into account*

**1 070 trainees  
Left from 1998  
to September 2004**

*Not taking into account suspensions or imperatives  
(illnesses, pregnancies, moving houses, incarceration, orientation for therapeutic or behavioural reasons... ):  
Around 20% of the young people who left*



## Marseilles' Second Chance School EDA-E2C Project: what is at stake



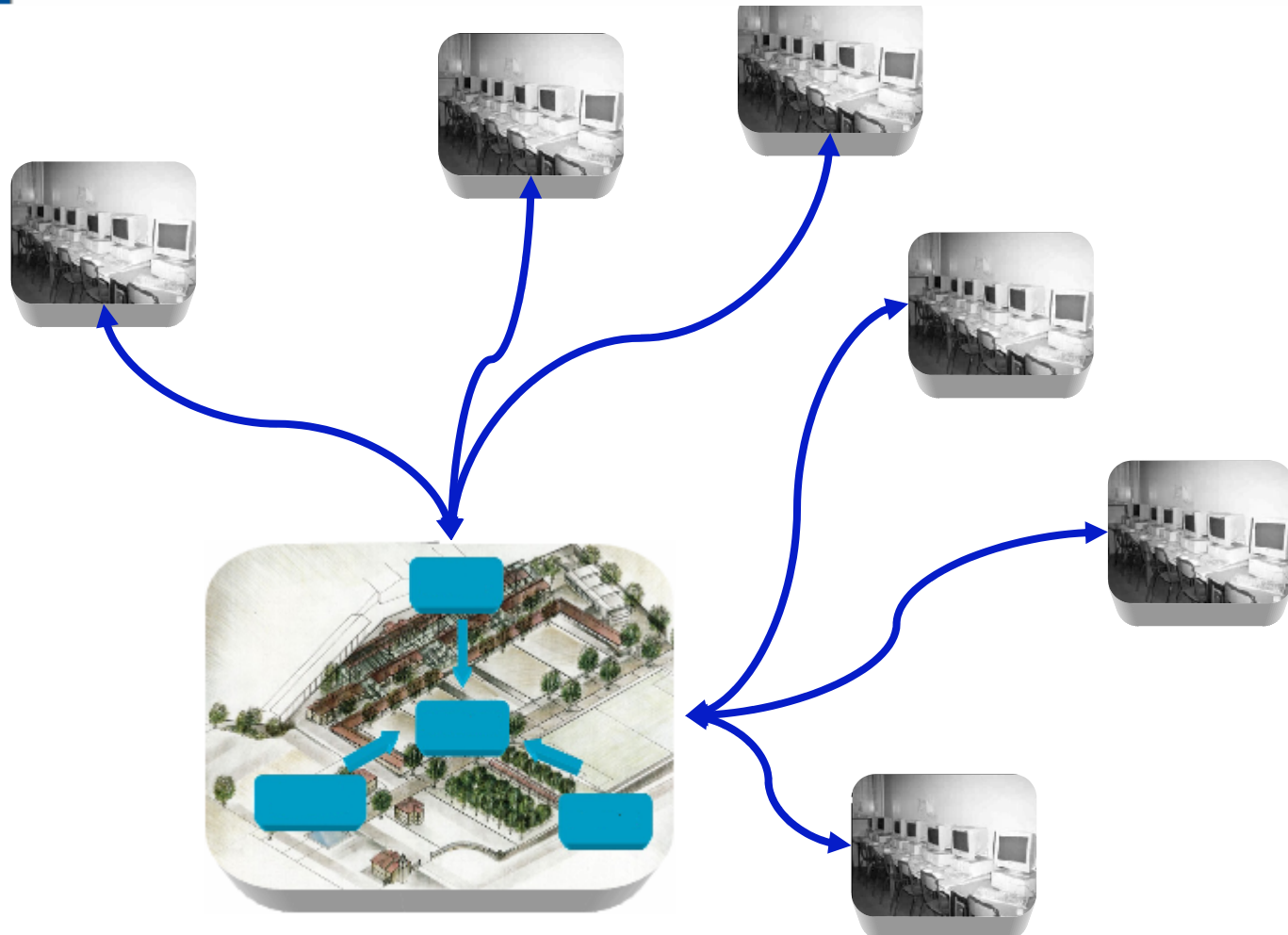
1 | Today, the E2C welcomes 330 trainees per year in St Louis

2 | In Marseilles 4 500 young people leave the educational system without any diploma  
**1 500 of them would benefit from the E2C**

Our challenge:

- 3 |
- extend the E2C concept all over the region
  - in order to welcome around 1 500 trainees per year
  - while keeping the same success rate

# EDA-E2C: the organisation





## EDA-E2C: the organisation

- 2,5 training days per week, on the EDA platform, in centres away from St Louis (individualized training program)
- 2,5 training days per week in St Louis in order to:
  - 1 specify the work project and implement the work placement periods with the Marketing Department ;
  - 2 assess and complete the received training with the Teaching Department
  - 3 handle existing peripheral problems with the Social Care Department
  - 4 take part in collective events (sports, pedagogical projects, Association destination Chance...)

# EDA-E2C: The basic skills core: a pedagogical approach



The pedagogical contents are compatible with the educational programs (certifications or diplomas)

## A system of judo belts in order to:

- 1- enable each trainee to evaluate himself/herself as regards the tasks to complete and which tasks have been completed
- 2- progress at one's own pace
- 3- symbolise the progress achieved

The basic skills core

Level Of training	Belt	D°	belt.	oral skills	written skills	belt.	listening	speaking	Comp.	written	belt.	WIN	WRD	NET	Excel
IV : A level	Red	4													
		3													
		2													
		1													
E2C O level equivalent	Black	4	Black	4	4	Black				3	Black				
		3	Black	3	3	Black				2	Black				
		2	Black	2	2	Black					Black				
		1	Black	1	1	Black					Black				
V : BEP, CAP, CFP E2C level 2	Brown	4	Brown	4	4	Brown				3	Brown				
		3	Brown	3	3	Brown				2	Brown				
		2	Brown	2	2	Brown					Brown				
		1	Brown	1	1	Brown					Brown				
V Bis : Before 0 level	Blue	4	Blue	4	4	Blue				3	Blue				
		3	Blue	3	3	Blue				2	Blue				
		2	Blue	2	2	Blue					Blue				
		1	Blue	1	1	Blue					Blue				
E2C level 1	Green	3	Green	3	3	Green					Green				
		2	Green	2	2	Green					Green				
		1	Green	1	1	Green	1	1	1	1	Green	1	1	1	1
		4	Green	4	4	Green					Green				
VI : end of Compulsory education	Orange	3	Orange	3	3	Orange					Orange				
		2	Orange	2	2	Orange			2	2	Orange	2	2	2	
		1	Orange	1	1	Orange		2	1	1	Orange	1	1	1	
		4	Orange	4	4	Orange					Orange				
Level 6e - 5e	Yellow	2	Yellow	2	2	Yellow					Yellow				
		1	Yellow	1	1	Yellow					Yellow				
		2	Yellow	2	2	Yellow					Yellow	2	2	2	
		1	Yellow	1	1	Yellow					Yellow	1	1	1	
9 no specific level defined	White	4	White	4	4	White	3				White				
		3	White	3	3	White					White				
		2	White	2	2	White					White				
		1	White	1	1	White					White				



**MARSEILLE**

**ECOLE DE LA 2ÈME CHANCE**



EDA-E2C

NOM D'UTILISATEUR

MOT DE PASSE

VALIDER QUITTER

A cartoon orange star character with a smiling face, eyes, and arms, wearing white sneakers, stands to the left of the login form. The form itself is light blue with rounded corners and contains the text 'EDA-E2C' at the top, followed by two input fields for 'NOM D'UTILISATEUR' and 'MOT DE PASSE', and two buttons labeled 'VALIDER' and 'QUITTER' at the bottom.

réalisé avec le soutien financier du Fonds Social Européen



## EDA-E2C: The basic skills core Contents



French



Mathematics



Informatics

Job search  
techniques

### ■ French

- everyday life situation as a support: looking for a job, cancelling one's credit card, putting one's child's name down for a school, moving house...



Example



Example

### ■ Mathematics

- From mastering integers to geometry: a practical approach (filling in a cheque, finding one's own way on a map, managing one's budget...)



Example



Example

### ■ Information technology

- The following topics are studied : Internet, Windows, Word (Excel will be implemented in a near future)



Example



Example

### ■ Job search techniques

- A transversal approach involving skills and knowledge acquired in other domains and disciplines



Example



## Project E2C-ENF: A joint action



1

Common initiative:

- Marseilles' Second Chance School
- The Moroccan non-formal education Ministry in charge of literacy

2

In order to:

- adapt Marseilles' Second Chance School "system" to the Moroccan social, economical and human reality,
- implement in Morocco Two Second Chance Schools of non-formal education.



## Project E2C-ENF : Overall objectives



- 1 | In agreement with the strategic objectives of the Moroccan non-formal education Ministry:
  - right to education for everyone
  - getting rid –step by step- of illiteracy
  
- 2 | Social and economical insertion, through education, of young people aged 13 to 16 who dropped out of schools or do not attend school
  
- 3 | Concretely speaking three main outputs:
  - going back to or attending the formal Moroccan Education system
  - joining a training school, getting a contract of apprenticeship
  - getting ready for employment



## Project E2C-ENF: Secondary objectives



- 1 take part in structuring and implementing the DENF's pedagogical contents as regards basic skills in French, mathematics, informatics,
- 2 apply new technologies to the designed contents to enable distance learning,
- 3 develop partnerships between the ENF and the world of enterprises,
- 4 be an active and structuring partner of an innovating actor – DENF– on an innovating action,
- 5 Develop a custom-made training, basic skills in Arabic, Mathematics, Informatics, French

## Project E2C-ENF: An example



The screenshot shows the login page for EDA-E2C. At the top, the logo for 'ec MARSEILLE ECOLE DE LA 2ÈME CHANCE' is displayed, featuring a stylized 'e2c' with a yellow star above the '2'. Below the logo, the text 'EDA-E2C' is embossed on a light blue background. A cartoon orange star character with a smiling face and white sneakers stands on the left. To the right, there are two input fields: 'NOM D'UTILISATEUR' and 'MOT DE PASSE'. Below these fields are two buttons: 'VALIDER' and 'QUITTER'. At the bottom right, there is a small European Union flag icon followed by the text 'réalisé avec le soutien financier du Fonds Social Européen'.